

# AS324MT-A

EN	Instruction Sheet
TR	Bilgi Dökümanı
TW	安裝說明
CN	安装说明



- EN ✘ This is an OPEN TYPE module and therefore should be installed in an enclosure free of airborne dust, humidity, electric shock and vibration. The enclosure should prevent non-maintenance staff from operating the device (e.g. key or specific tools are required for operating the enclosure) in case danger and damage on the device may occur.
- FR ✘ Ceci est un module ouvert et il doit donc être installé dans un coffret à l'abri des poussières, des vibrations et ne pas être exposé aux chocs électriques. Le boîtier ou l'armoire doit éviter toute action d'un personnel autre que celui affecté à la maintenance de l'appareil (par exemple, clefs, outils spécifiques pour l'ouverture du coffret), ceci afin d'éviter tout accident corporel ou endommagement du produit).
- TR ✘ Bu ürün AÇIK TİP bir modül olup toz, rutubet, elektrik şoku ve titreşimden uzak kapalı yerlerde muhafaza edilmelidir. Yanlış kullanım sonucu ürünün zarar görmesini önlemek için yetkili olmayan kişiler tarafından ürüne müdahale edilmesini önleyecek koruyucu önlemler alınmalıdır. (Ürünün bulunduğu panoya kilit konulması gibi).
- TW ✘ 本機為開放型 ( OPEN TYPE ) 機種，因此使用者使用本機時，必須將之安裝於具防塵、防潮及免於電擊/衝擊意外之外殼配線箱內。另必須具備保護措施 ( 如：特殊之工具或鑰匙才可打開 ) 防止非維護人員操作或意外衝擊本體，造成危險及損壞。
- CN ✘ 本机为开放型 ( OPEN TYPE ) 机种，因此使用者使用本机时，必须将其安装于具防尘、防潮及免于电击/冲击意外的外壳配线箱内。另必须具备保护措施 ( 如：特殊的工具或钥匙才可打开 ) 防止非维护人员操作或意外冲击本体，造成危险及损坏。

EN Please refer to the AS Series Hardware Manual for more information. TR Daha fazla bilgi için lütfen AS Serisi Donanım Klavuzuna bakınız.

TW 詳細資料請參考 AS 系列硬體手冊 CN 详细资料请参考 AS 系列硬件手册

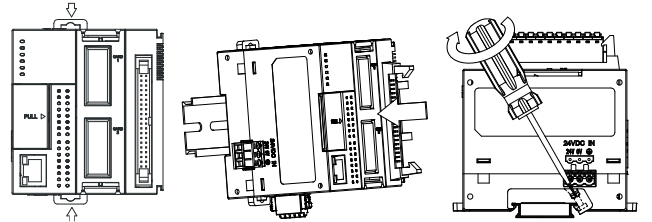
EN Assembly TR Montaj TW 安裝 CN 组装

EN Clip up the two DIN rail clip on the module. Parallel the module groove on the back to the DIN rail, then push and slide along until hearing a click.

TR Modül üzerindeki iki DIN ray klipsini dışa doğru çekin. Alttaki modül oyuğunu DIN ray ile paralel konuma getiriniz ve sonra klik sesini duyana kadar klipsleri içe doğru bastırın.

TW 將模組上下方的兩個 DIN 軌固定扣往中間壓後，將模組後方勾槽平行對準 DIN 軌並往 DIN 軌壓直到喀一聲，即完成。

CN 将模块上下方的两个 DIN 轨固定扣往中间压后，将模块后方勾槽平行对准 DIN 轨并往 DIN 轨压直到喀一声，即完成。



## TÜRKİYE İTHALATÇI FIRMA

FABRİKA AYGITLARI SİSTEM TEKNOLOJİSİ BİLGİSAYAR YAZILIM VE ELEKTRONİK PAZARLAMA İTHALAT İHRACAT ANONİM ŞİRKETİ

FAST Plaza Küçükbakkalköy Mh. Dereyolu Sk. No:4  
ATAŞEHİR / İSTANBUL  
T: +(90) 216 574 94 34 F: +(90) 216 574 16 60  
E: satis@fasttld.net W: www.fasttld.net

## Üretici Firma

Delta Electronics, Inc.

Taiwan

31-1 Xingbang Road,

Guishan Industrial Zone,

Taoyuan County 33370,

Taiwan

TEL: 886-3-362-6301

FAX: 886-3-362-7267

China

1688 Jiangxing East Road,

Wujiang Economic Development Zone

Wujiang City, Jiang Su Province,

People's Republic of China (Post code: 215200)

TEL: 86-512-6340-3008

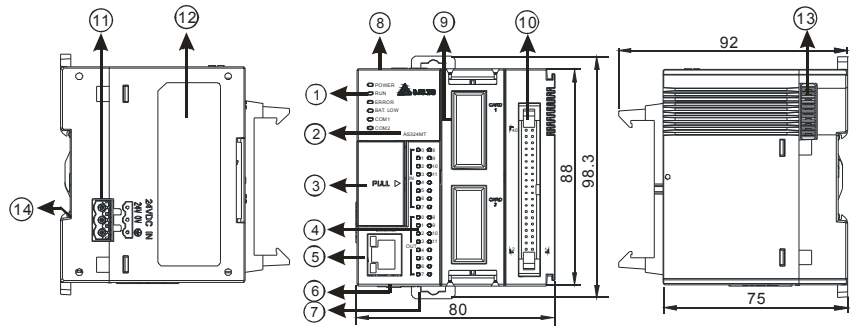
FAX: 86-769-6340-7290

EN Dimensions(mm) & Product Profile

TR Ölçüler(mm) & Ürün Görünüşü

TW 尺寸 (mm) 及產品外觀

CN 尺寸 (mm) 及產品外觀



EN	TR	TW	CN
1	Status indicator	Durum göstergesi	状态指示灯
2	Model name	Model adı	机种名称
3	RUN/STOP switch, USB communication port, SD card slot, VR0/VR1	RUN/STOP anahtarı, USB haberleşme port, SD kard slot, VR0/VR1	RUN/STOP 开关、USB 通讯口、SD 卡插槽、VR0/VR1
4	I/O indicator	I/O indikatör	I/O 指示灯
5	Ethernet communication port	Ethernet haberleşme port	Ethernet 通讯埠
6	COM1/COM2 port	COM1/COM2 port	COM1/COM2 端口
7	DIN rail clip	DIN ray klipsi	DIN 軌固定扣
8	Battery holder (battery NOT included)	Pil yuvası (pil dahil değildir)	電池座 (本產品不隨機附贈電池)
9	Extension card slot	Genişleme kart slotu	功能卡插槽
10	MIL connector	MIL konnektör	牛角座連接器
11	DC power input	DC power girişi	電源輸入口
12	Label	Etiket	標籤
13	Extension module communication port	Genişleme modülü iletişim portu	擴充模組通訊埠
14	Grounding shrapnel	Topraklama parçası	接地彈片

EN I/O TR I/O TW 輸入輸出 CN 輸入輸出

EN	TR	TW	CN
40	39	AS324MT	
38	37	S/S	S/S
36	35	X0.11	X0.10
34	33	X0.9	X0.8
32	31	X0.7	X0.6
30	29	X0.5	X0.4
28	27	SG0	SG0
26	25	X0.3-	X0.3+
24	23	X0.2-	X0.2+
22	21	X0.1-	X0.1+
20	19	X0.0-	X0.0+
18	17	C0	C0
16	15	Y0.11	Y0.10
14	13	Y0.9	Y0.8
12	11	Y0.7	Y0.6
10	9	Y0.5	Y0.4
8	7	SG1	SG1
6	5	Y0.3-	Y0.3+
4	3	Y0.2-	Y0.2+
2	1	Y0.1-	Y0.1+
		Y0.0-	Y0.0+

**X0.4~X0.11**

Sinking      Sourcing

**Y0.4~Y0.11**

I/O (Sink)

**X0.0+~X0.3+/X0.0~-X0.3-: 5VDC, differential      Y0.0+~Y0.3+/Y0.0~-Y0.3-: 5VDC, 20mA, differential**

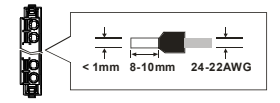
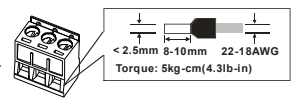
EN Wiring TR Bağlantı TW 配線 CN 配线

EN Please use single-core or multi-core cables. The specifications for the terminals and the wiring are shown in the figure. The temperature of the copper conductor should be 60/75°C.

TR Lütfen tek damarlı veya çok damarlı kablolar kullanınız. Klemensler ve bağlantılar ile ilgili özellikler şekilde gösterilmektedir. Bakır iletken sıcaklığı 60/75°C olmalıdır.

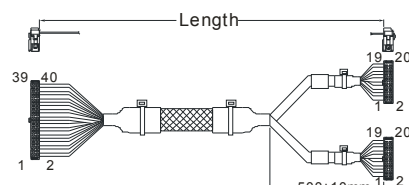
TW 輸出 / 入配線端請使用單蕊裸線或多蕊線。端子與線材規格示意圖如右所示。只能使用 60/75°C 的銅導線。

CN 輸出 / 入配線端請使用單蕊裸線或多蕊線。端子與線材規格示意圖如右所示。只能使用 60/75°C 的銅導線。

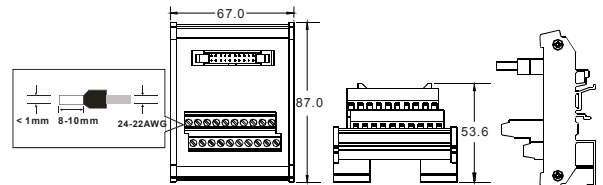


I/O Extension Cable

External Terminal Module



Length:  
 UC-ET010-24D(1M)(28AWG)  
 UC-ET020-24D(2M)(28AWG)  
 UC-ET030-24D(3M)(28AWG)



UB-10-ID16A(mm)