

Industrial Ethernet

DVW series Instruction Sheet

安 裝 說 明 安 裝 說 明

Wireless AP / WDS / Client / Gateway
工業級無線 AP / WDS / Client / Gateway
工业级无线 AP / WDS / Client / 网关



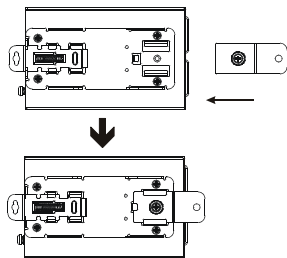
4 Installation

■ DIN-Rail Mounting

◆ Mounting Step 1: Hook the upper end of the DIN clip of the DVW series of wireless devices on the DIN-Rail. Step 2: Lightly push the DVW series of wireless devices toward the DIN-Rail until they contact each other closely.	◆ Removal Step 1: Insert the flat-blade screwdriver into the DIN clip and pull the DIN clip downward. Step 2: Pull the DVW series of wireless devices, and you can remove it from the DIN-Rail.
--	--

■ Wall Mounting

Step 1: Insert the wall mounting bracket into the slot on the rear panel of the DVW series of wireless devices, and tighten the screw on it, as shown in the diagram below.
Step 2: Place the wall mounting bracket in an appropriate position, and tighten the two screws on the bracket and the DIN clip.



5 Wiring the Redundant Power Input

The DVW series of wireless devices are equipped with two sets of DC input (PWR1 / PWR2). Both sets of DC input can be connected to a wide range of power sources (12 to 48VDC). If one power source fails, the other live source can work as a backup to ensure that the machine operates normally.

Step 1: Insert the negative and positive DC wires into the terminal block, and make sure that the positive DC wire is connected to V1+ or V2+, and that the negative DC wire is connected to 0V.

Step 2: To prevent the loose DC wires, tighten the wire clamp screws on the terminal block connector with the flat-blade screwdriver.



Warning

ENGLISH

- ✓ This instruction sheet only provides information on electrical specifications, general specifications, installation and wiring.
- ✓ The components and the IC on the circuit board can be easily damaged by static electricity; therefore DO NOT touch them before precautions against static electricity are done. To prevent the danger and damage from occurring, people who are not maintenance staff should not operate or accidentally hit the body of the DVW series device. Besides, DO NOT touch any terminal when the power is switched on.
- ✓ Please read this instruction sheet thoroughly, and follow the instructions to prevent the damage to the device or injury to the staff.

1 Introduction

Thank you for purchasing the DVW Wireless device. The DVW series of wireless devices are equipped with the intelligent alarm, digital input function, and allow the wide range of operating temperature (-40 to 75°C). The DVW series of wireless devices are designed to support the application in any rugged environment and comply with UL, CE, FCC and SRRC standards.

2 Functions

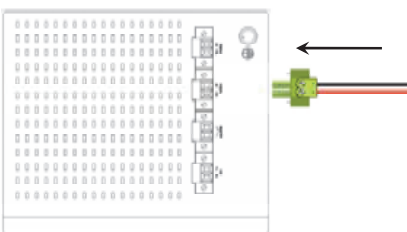
- 10/100/1000Base-T (RJ45)
- IEEE 802.3/802.3u/802.3ab/802.3x
- IEEE 802.11 a/b/g/n
- Auto-negotiation speed
- Auto-MDI/MDI-X

3 Package Checklist

- One Delta DVW Wireless AP/WDS/Client/Gateway x1
- Omni-directional Antenna x3
- Wall Mounting Plate x1
- USB Type A to Type B Console Cable x1
- User Manual and Software CD
- Instruction Sheet

NOTE: Please use copper wire 60/75°C, conductor 16 to 24 AWG; screw up at torque 2.2kgf-cm (1.91 in-lbs)
Step 3: Insert the plastic terminal block connector into the terminal block receptor on the DVW series of wireless devices.

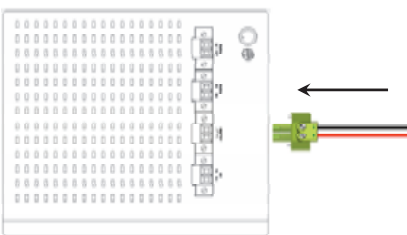
NOTE: Grounding the ground terminal on the DVW series of wireless devices can avoid the noise effect due to the electromagnetic interference (EMI).



	Please use Class 2 power sources.
	The devices are designed for operation with a LPS power supply of "12 to 48VDC, 1A power rating" in accordance with EN 60950-1 ed.2. The devices are intended to be operated under altitude up to 10,000ft (3048m), the DC power supply source comply with the requirement of 10,000ft (3048m) of clearance is multiplied by the altitude correction factor(1.15), specified in table A.2 of IEC 60664-1, 1992+A1:2000.

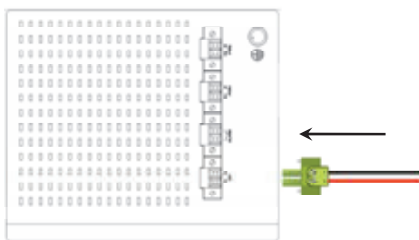
6 Wiring the Alarm Contact

The DVW series of wireless devices are equipped with one set of alarm. The alarm contact is a dry relay. If one of the two power sources fails, one of digital input is triggered or the communication is interrupted, the contact will turn from an "OPEN" circuit to a "CLOSED" circuit. The relay can be connected to a 5A/24VDC power source.



7 Wiring the Digital Input

The DVW series of wireless devices are equipped with one set of digital input. If the power source between 0 to 5V, the state of DI is OFF. If the power source between 11 to 30V, the state of DI is ON. The maximum input current is 6mA.



The electrical circuit of DI is independent, so you don't need to care about NPN type or PNP type of DI. If the electrodes positive and electrodes negative of DI has been reversed when you plug the cable, DI still can work properly.

7 Terminal Resistors

Built-In Termination Resistor	Switch
Use built-in 120Ω Termination	On
Use External or No Termination	Off

8 LED Indicators

■ DVW-W02W2-E2

LED	Color	Status	Description
PWR1/PWR2	Green	ON	The power is supplied normally.
		OFF	The power is not supplied.
Status	Green	ON	The status of the device is good.
		OFF	The status of the device isn't good.
DI1/DI2	Green	ON	The DI is triggered.
		OFF	The DI is not triggered.
COM RX/ COM TX	Amber	Blinking	The port is transmitting data.
		OFF	The port is idle.
		OFF	The port is receiving data.
Client Mode	Amber	ON	The device works in Client/ WDS Slave mode.
		OFF	The wireless function is disabled.
AP/WDS Mode	Green	ON	The device works in AP/ Repeater/ WDS Master mode.
		OFF	The wireless function is disabled.
ALARM	Red	ON	The communication is interrupted, there is a power failure, or alarm event which has been configured happened.
		OFF	The communication is not interrupted, there is no power failure, or alarm event which has been configured doesn't happen.

LED	Color	Status	Description
10/100/1000M (RJ45)	Green	ON	The port is connected at the speed of 1000 Mbps.
		ON	The port is connected at the speed of 10 or 100 Mbps.
		OFF	The port is disconnected.
LINK/ACT	Green	ON	The network communication connection has been established.
		Blinking	The data is being transmitted.
		OFF	The network communication connection has not been established.
Wireless Strange	Green	ON	3 level wireless stranger inductor. (High/ Middle/ Low)
		OFF	No wireless signal.

9 Interface

■ 10/100/1000Base-T Connection

The 10/100/1000Base-T ports of the DVW series of wireless devices are used to connect to Ethernet. RJ45 ports support MDI (NIC-type) and MDI-X (HUB/Switch-type) modes, the pin definition of the Ethernet cable is as follows.

10/100Base-T(X)		1000Base-T	
PIN	MDI Mode	MDI-X Mode	MDI/MDI-X Mode
1	Tx+	Rx+	TP0+
2	Tx-	Rx-	TP0-
3	Rx+	Tx+	TP1+
4	n.c	n.c	TP2+
5	n.c	n.c	TP2-
6	Rx-	Tx-	TP1-
7	n.c	n.c	TP3+
8	n.c	n.c	TP3-

■ Serial Port Connection

PIN	RS-485 (2pin)	RS-422/485 (4 pin)	RS-232
1		TXD-	DCD
2		TXD+	RXD
3	D+	RXD+	TXD
4	D-	RXD-	DTR
5	GND	GND	GND
6			DSR
7			RTS
8			CTS

10 Mechanical Characteristics

DVW-W02W2-E2	
Case	IP40 Aluminum metal case
Dimension (mm)	145.3 (H) x 112.5(W) x 108.7(D)
Weight (g)	500g

◆ For more information about the product, please visit <http://www.deltaww.com>

注意事項

繁體中文

- ✓ 此安裝手冊只提供電氣規格、一般規格、安裝及配線。
- ✓ 電路板上的零件與 IC 易受靜電破壞，未做好防靜電措施前請勿用手觸摸，防止非維護人員操作或意外衝擊本體，造成危險與損壞，且請勿在上電時觸摸任何端子。
- ✓ 請務必仔細閱讀本安裝說明，並依照說明指示進行操作，以免造成產品受損，或導致人員受傷。

1 產品簡介

感謝您使用台達DVW無線設備。DVW系列無線設備是專為應用於各式嚴苛環境所設計之解決方案，具備電源故障、數位輸入、通訊斷線警報輸出及-40 ~ 75°C寬溫工作標準，優越工藝技術，通過UL、CE、FCC與SRRC等工業安規認證。

2 功能特色

- 10/100/1000Base-T (RJ45)
- IEEE 802.3/802.3u/802.3ab/802.3x
- IEEE 802.11 a/b/g/n
- 自動傳輸速率偵測
- MDI/MDI-X 自動跳線偵測

3 產品包裝

- 台達 DVW 無線 AP/WDS/Client/Gateway x1
- 全向性天線 x3
- 壁掛式金屬配件
- USB A 公轉 B 公控制線 x1
- 使用手冊及產品光碟
- 安裝說明書

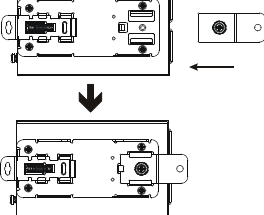
4 安裝方式

■ 軌道式安裝

<ul style="list-style-type: none">◆ 安裝 步驟一：將 DVW 背後的金屬安裝配件扣住 DIN-Rail 步驟二：將 DVW 向內推，直到金屬彈簧夾與 DIN-Rail 完全緊合	<ul style="list-style-type: none">◆ 卸下 步驟一：將一字起子插入金屬彈簧夾下的洞孔並向下拉 步驟二：拉起 DVW 底部即可順勢取出
--	---

■ 壁掛式安裝

步驟一：將附送的壁掛式金屬配件插入 DVW 後的凹槽，並用十字螺絲起子將金屬配件鎖緊於 DVW
步驟二：經由 DVW 後金屬配件的兩個螺絲孔，將 DVW 鎖緊於您所需要的位置。



5 備援式電源輸入

DVW內建兩組12~48VDC直流電輸入 (PWR1/PWR2)，當其中一組電源故障時，另一組電源可以馬上啟動，確保機器正常運作。

步驟一：將端子座公頭從 DVW 取下，並將 DC 直流電源線插入端子座公頭上，並確認正級接入 V1+或 V2+而負級接入 0V

步驟二：利用小一字螺絲起子將電源線鎖緊於端子座公頭上



註：請使用60/75°C，導體線徑為16-24AWG之銅線；其鎖螺絲之扭力為2.2kgf-cm (1.91 in-lbs)
步驟三：將端子座公頭插回 DVW 端子座母座上。

