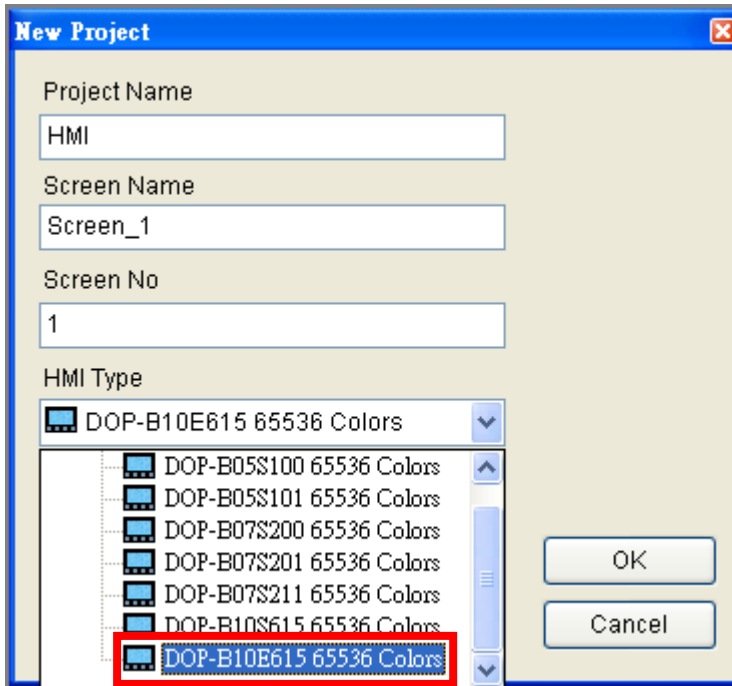


Audio output function of HMI



© Select HMI Type :

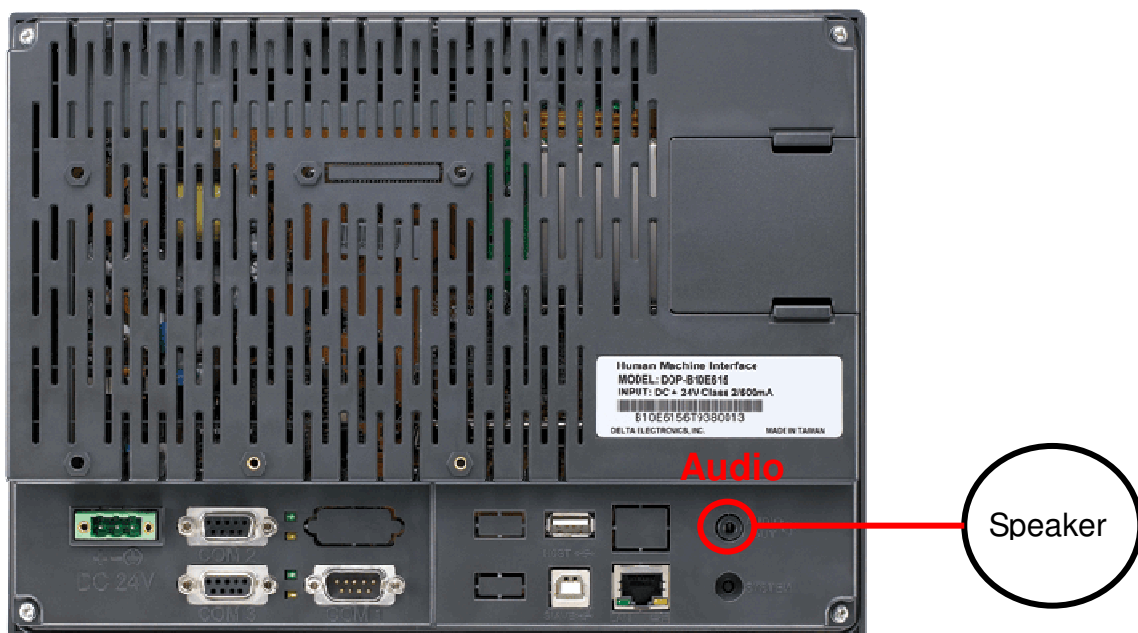
The HMI which supports audio output : **DOP-B10E615**



© Connection :

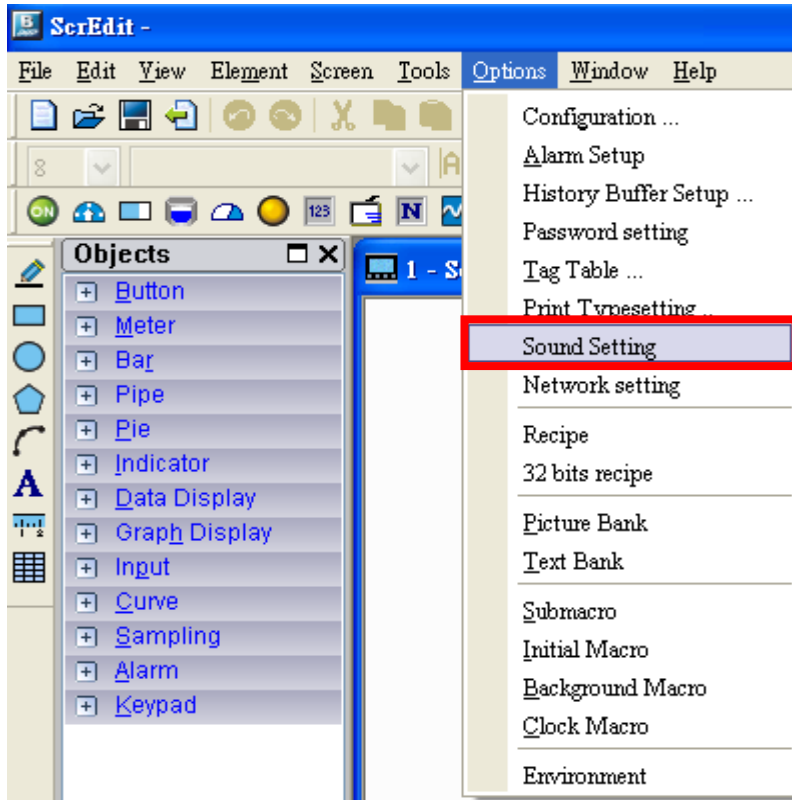
Connect Speaker with HMI Audio output.

DOP-B10E615

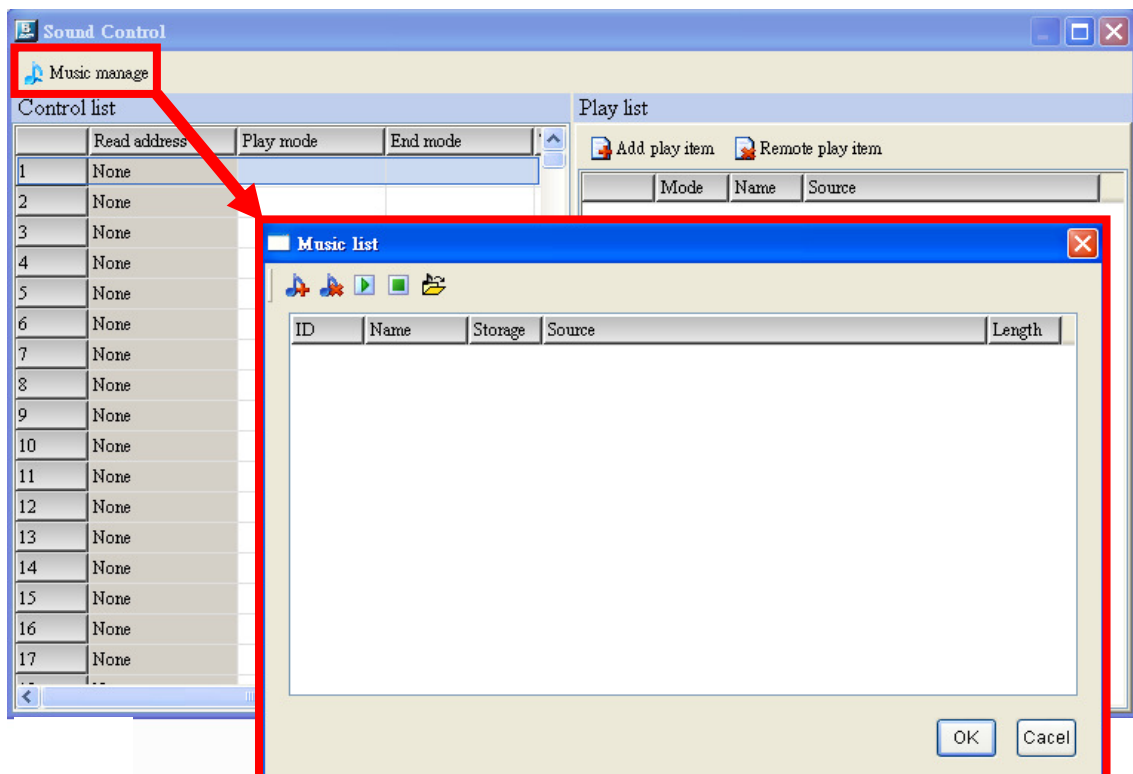


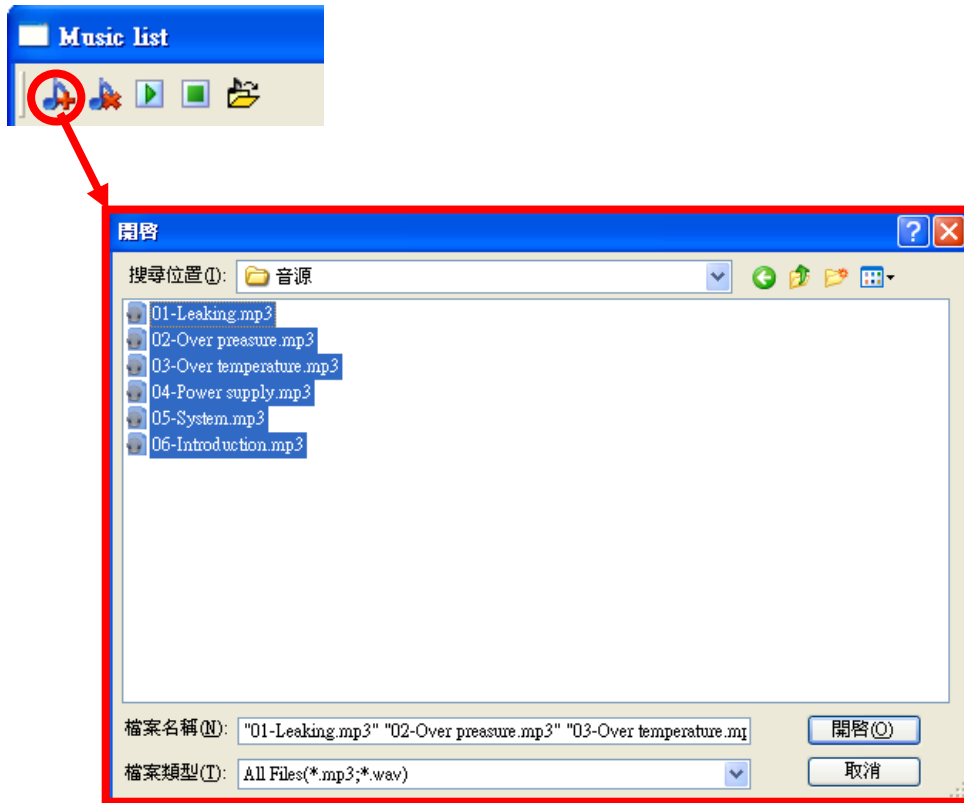
◎ Audio output setting :

1、Options → Sound Setting



2、Music manage → Add the audio files in Music List (mp3、wav)

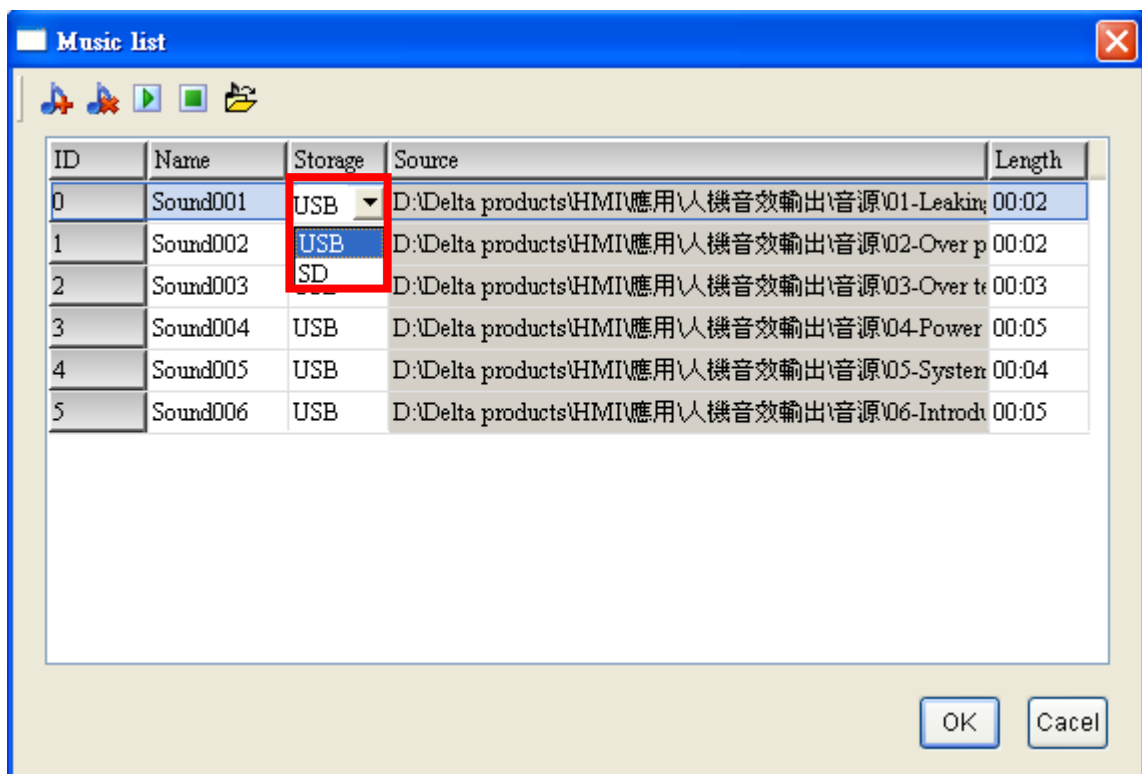




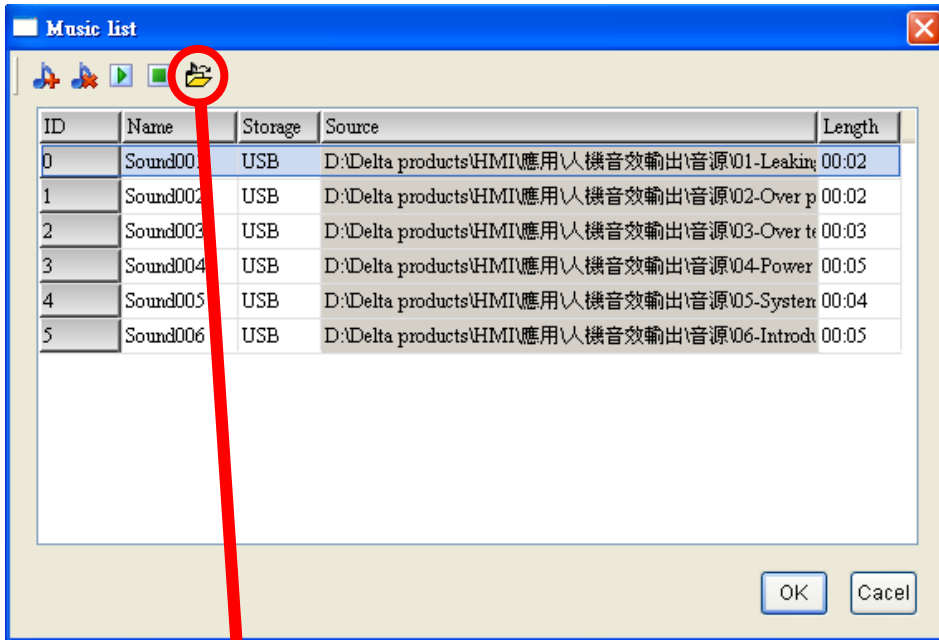
3、Select the storage : USB or SD Card

USB and SD Card must be format to FAT32.

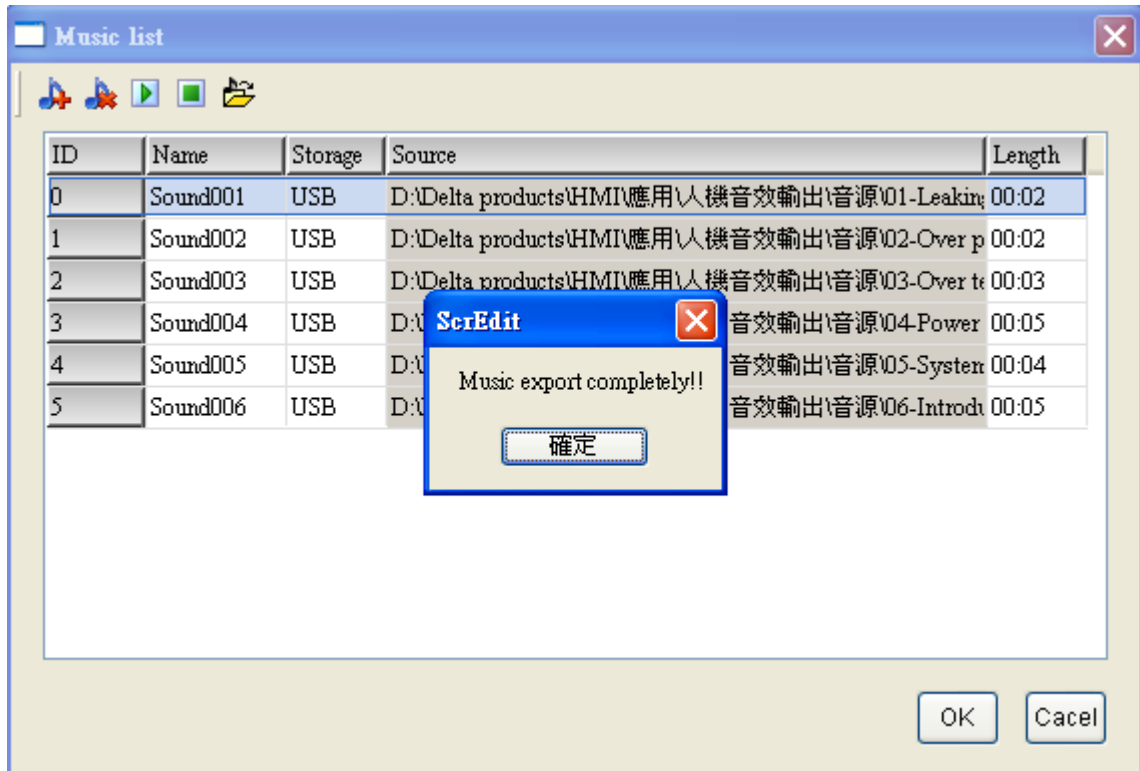
(Select USB in this example)



4、Export the audio files to USB disk.



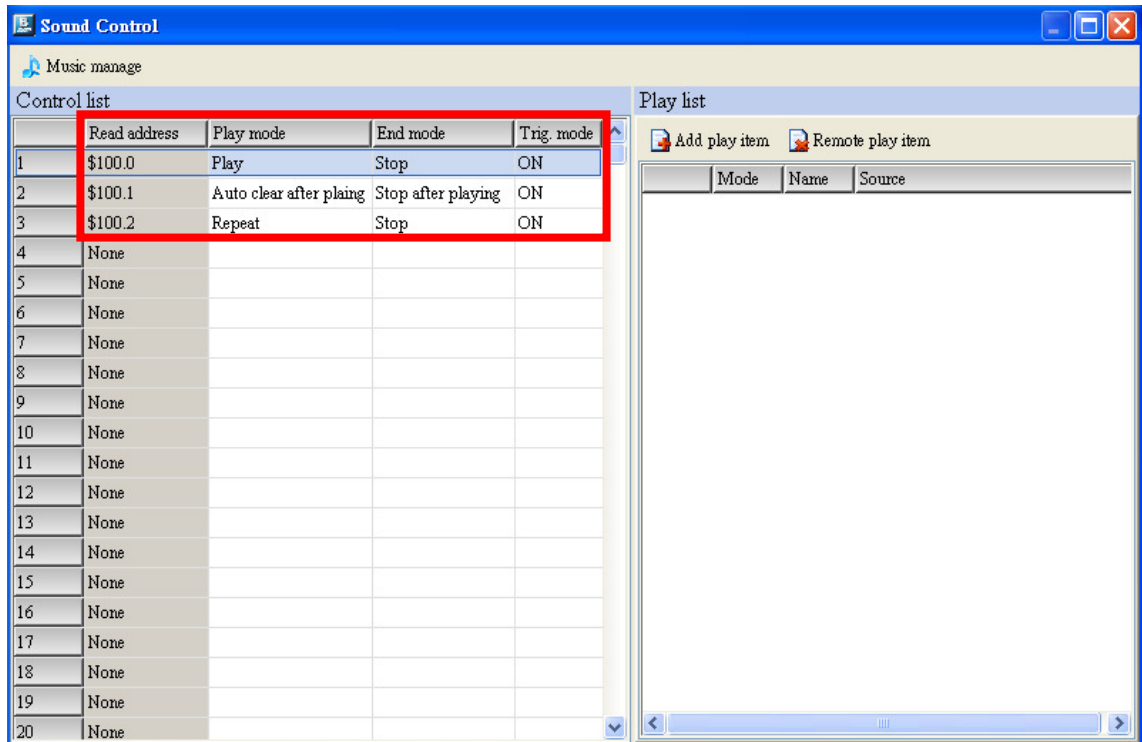
5、 "Music export completely!!" message will pop-up.



You will see the audio files in USB disk.

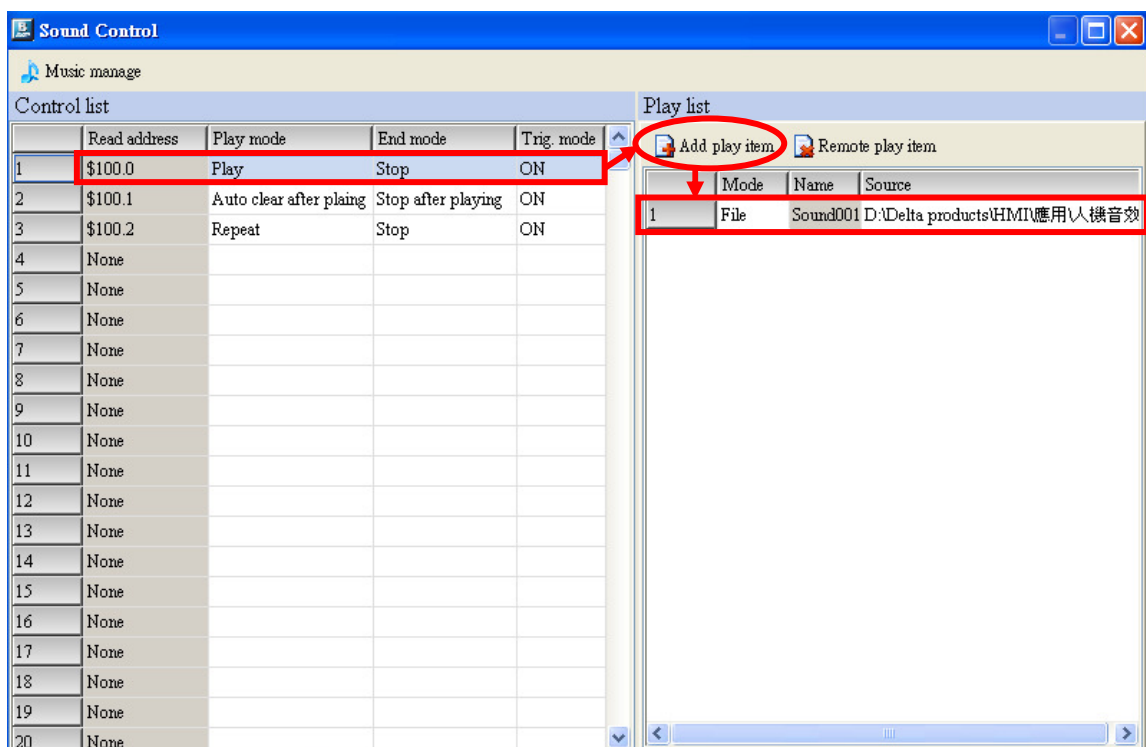


6、Set the Read address、Play mode、End mode、Trig. Mode on Control List.



Set and add audio files for every address. For example :

(1) Address \$100.0 for 1 audio file.



(2) Address \$100.1 for 3 audio files.

The screenshot shows the 'Sound Control' window with the 'Music manage' section. The 'Control list' table has the following data:

	Read address	Play mode	End mode	Trig. mode
1	\$100.0	Play	Stop	ON
2	\$100.1	Auto clear after plaing	Stop after playing	ON
3	\$100.2	Repeat	Stop	ON
4	None			
5	None			
6	None			
7	None			
8	None			
9	None			
10	None			
11	None			
12	None			
13	None			
14	None			
15	None			
16	None			
17	None			
18	None			
19	None			
20	None			

The 'Play list' table has the following data:

	Mode	Name	Source
1	File	Sound002	D:\Delta products\HMI\應用\人機音交
2	File	Sound003	D:\Delta products\HMI\應用\人機音交
3	File	Sound004	D:\Delta products\HMI\應用\人機音交

Red boxes highlight the 'Add play item' button and the 'Add play item' button in the play list. A red arrow points from the 'Add play item' button in the play list to the 'Add play item' button in the control list.

(3) Address \$100.2 for 2 audio files.

The screenshot shows the 'Sound Control' window with the 'Music manage' section. The 'Control list' table has the following data:

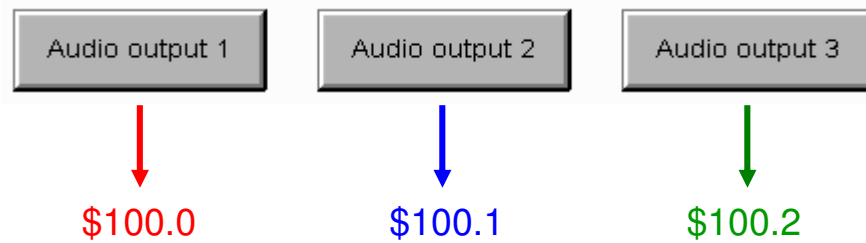
	Read address	Play mode	End mode	Trig. mode
1	\$100.0	Play	Stop	ON
2	\$100.1	Auto clear after plaing	Stop after playing	ON
3	\$100.2	Repeat	Stop	ON
4	None			
5	None			
6	None			
7	None			
8	None			
9	None			
10	None			
11	None			
12	None			
13	None			
14	None			
15	None			
16	None			
17	None			
18	None			
19	None			
20	None			

The 'Play list' table has the following data:

	Mode	Name	Source
1	File	Sound005	D:\Delta products\HMI\應用\人機音交
2	File	Sound006	D:\Delta products\HMI\應用\人機音交

Red boxes highlight the 'Add play item' button and the 'Add play item' button in the play list. A red arrow points from the 'Add play item' button in the play list to the 'Add play item' button in the control list.

7、Set the address of buttons (Maintained buttons were used in this example) , and download the program to HMI.



8、Put the USB disk into HMI , now you can output audio via these maintained buttons.

